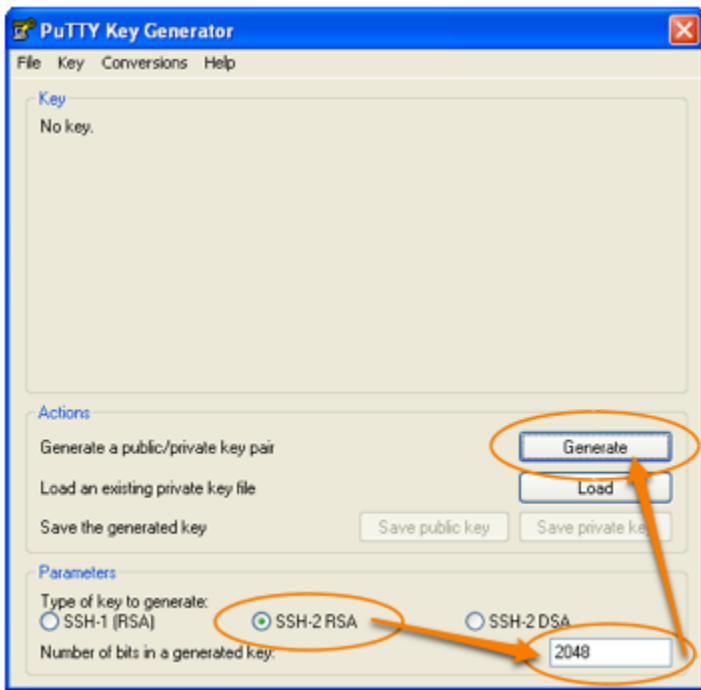
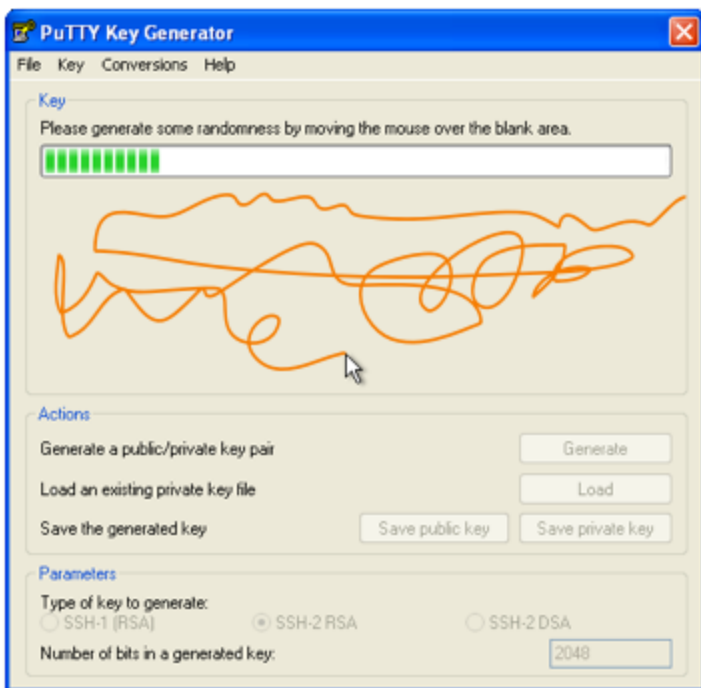


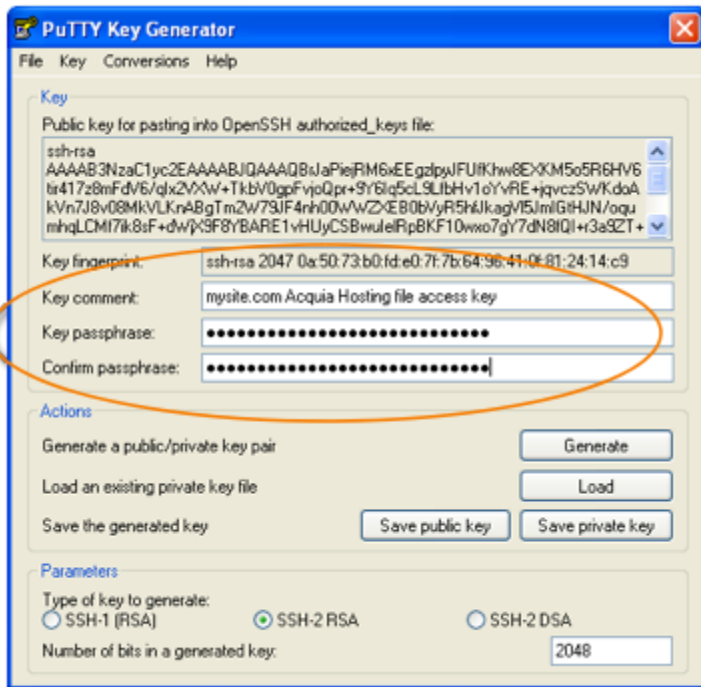
Open up puttygen.exe.



Make sure SSH-2 RSA and 2048. Then click Generate

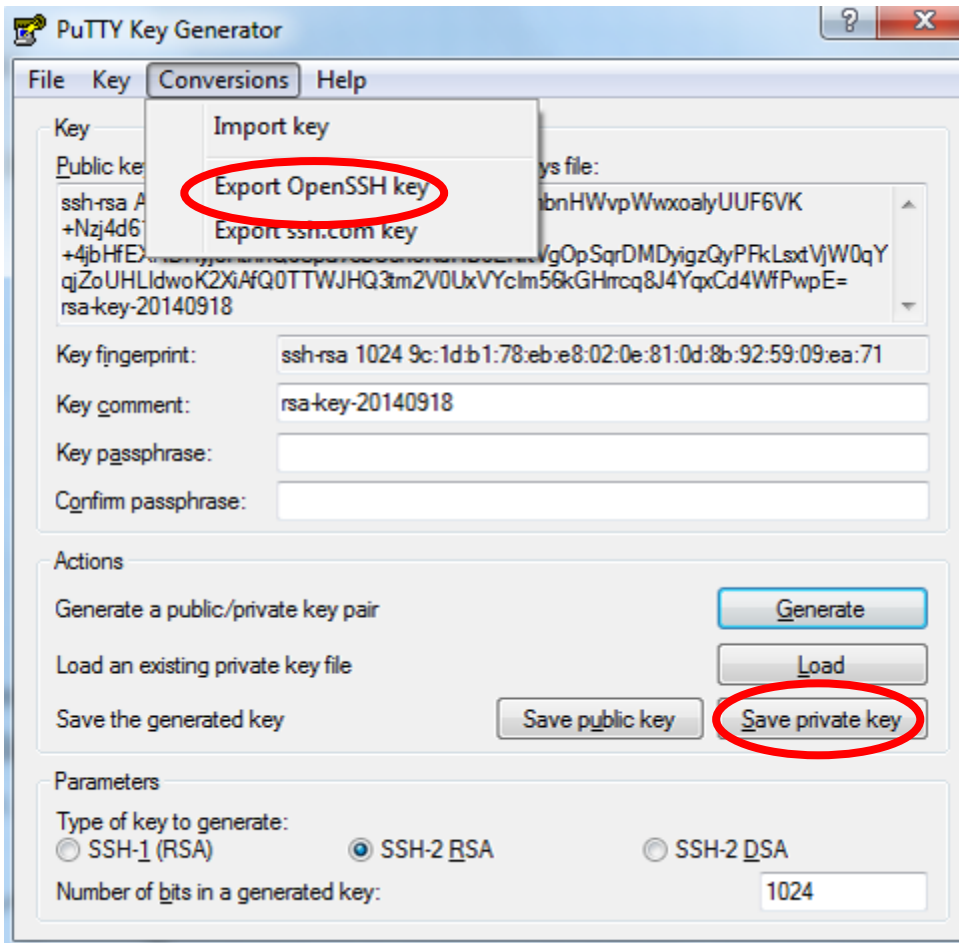


In the blank area provided randomly move your mouse. This must be done in order to generate a random SSH Key.

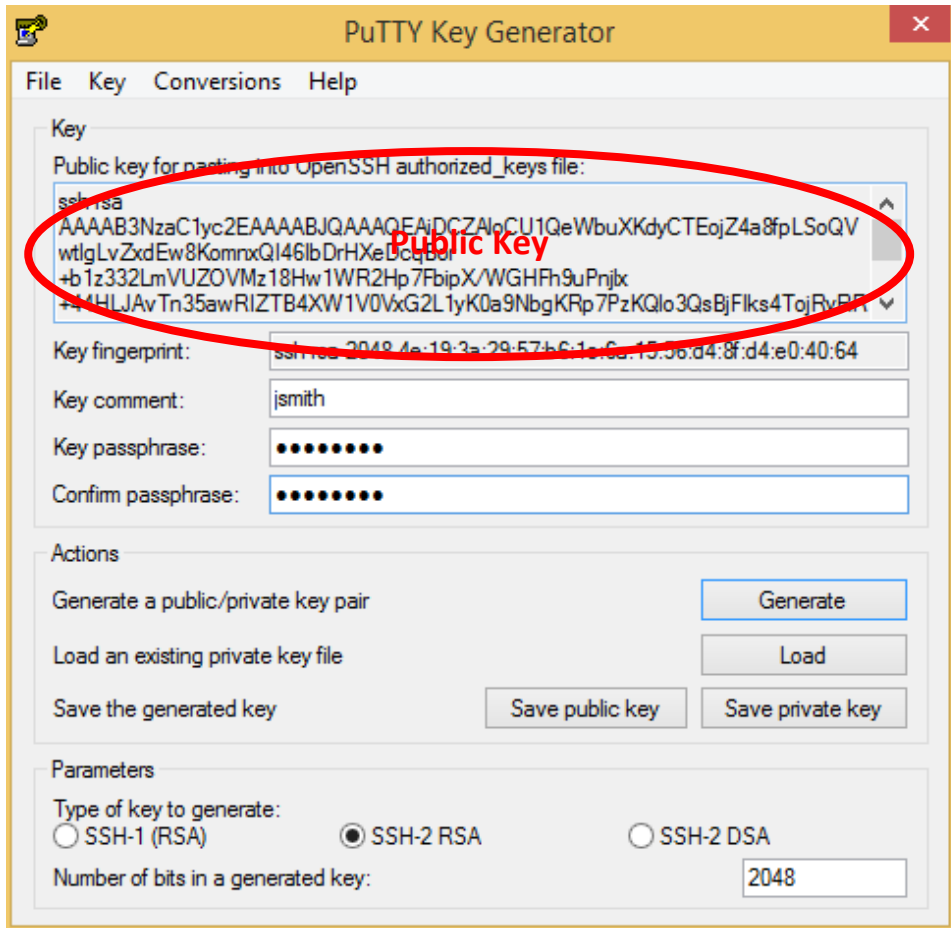


For the key comment type in first initial last name one word for example if your name is John Smith type jsmith in the key comment box.

Type in whatever password you want to use for key passphrase and confirm passphrase making sure they are the same. Remember your password.



Go to the Conversions menu and click export OpenSSH key. Save this on your H:// Drive. Click Save private key and place it on to your H:// Drive.



Copy the Public Key starting with ssh-rsa and ending with your username.

The screenshot shows the Acquia Cloud management interface. At the top, there are navigation links for 'Insight', 'Cloud', and 'Search', along with a 'GIT URL' dropdown. A left sidebar contains a 'Workflow' menu with items: Domains, Servers, Users and keys, SSL, Databases, Logs, Statistics, Backups, **Drush and API** (circled in red), and Cron. The main content area displays three environment stages: 'Dev', 'Stage', and 'Prod'. The 'Dev' stage shows 'Code: Live development', 'Files', and 'DB: magnifacentnkl'. The 'Stage' stage shows 'Code: tags/WELCOME' and 'DB: magnifacentnkl'. The 'Prod' stage has a message: 'Enable your Prod environment. Upgrade now!'. Below the stages is a 'Disk Quota' section with a bar chart showing usage: Code (6 MB of 1000 MB), Files (141 MB of 1000 MB), and Databases (38 MB of 1000 MB). At the bottom, a task log shows a successful 'Remove SSH key' operation.

On the cloud click on the Drush and API link.

The screenshot shows the Acquia user profile page for Andrew Trexler. The top navigation bar includes 'Acquia', 'Sites', 'Add-ons', 'Teams', 'Subscriptions', 'Help', and a user profile icon labeled 'Andrew'. The main content area has a header for 'Andrew Trexler' with sub-links for 'PROFILE', 'CREDENTIALS', and 'SUBSCRIPTIONS'. Below this are sections for 'Acquia password' (with a 'Change password' link), 'SSH keys' (with a description and a 'Remove' link for 'trex121'), and 'Add SSH key' (circled in red). The 'Drush integration' section includes a 'Download Drush aliases' link and a terminal code block: `$ tar -C $HOME -xf $HOME/Downloads/acquiacloud.tar.gz`. The 'Cloud API' section is partially visible at the bottom.

On the following page click on the Add SSH key link.

ADD SSH KEY

Andrew Trexler > Credentials

Adding an SSH key allows you to access your Git repository and log in to your web server(s) with ssh, sftp, and rsync. [Learn more.](#)

Nickname *

Nickname

Enter a nickname for this SSH key. Any sequence of letters, numbers, and underscores.

Public key *

Public Key

Enter your SSH public key. To learn how to generate a SSH public key, see instructions for [Mac OS and Linux](#) or [Windows](#).

In the nickname box place the same username as before first initial lastname and paste the Public Key copied from puttygen into the box labeled public key so it looks like the following picture.

Adding an SSH key allows you to access your Git repository and log in to your web server(s) with ssh, sftp, and rsync. [Learn more.](#)

Nickname *

jsmith

Enter a nickname for this SSH key. Any sequence of letters, numbers, and underscores.

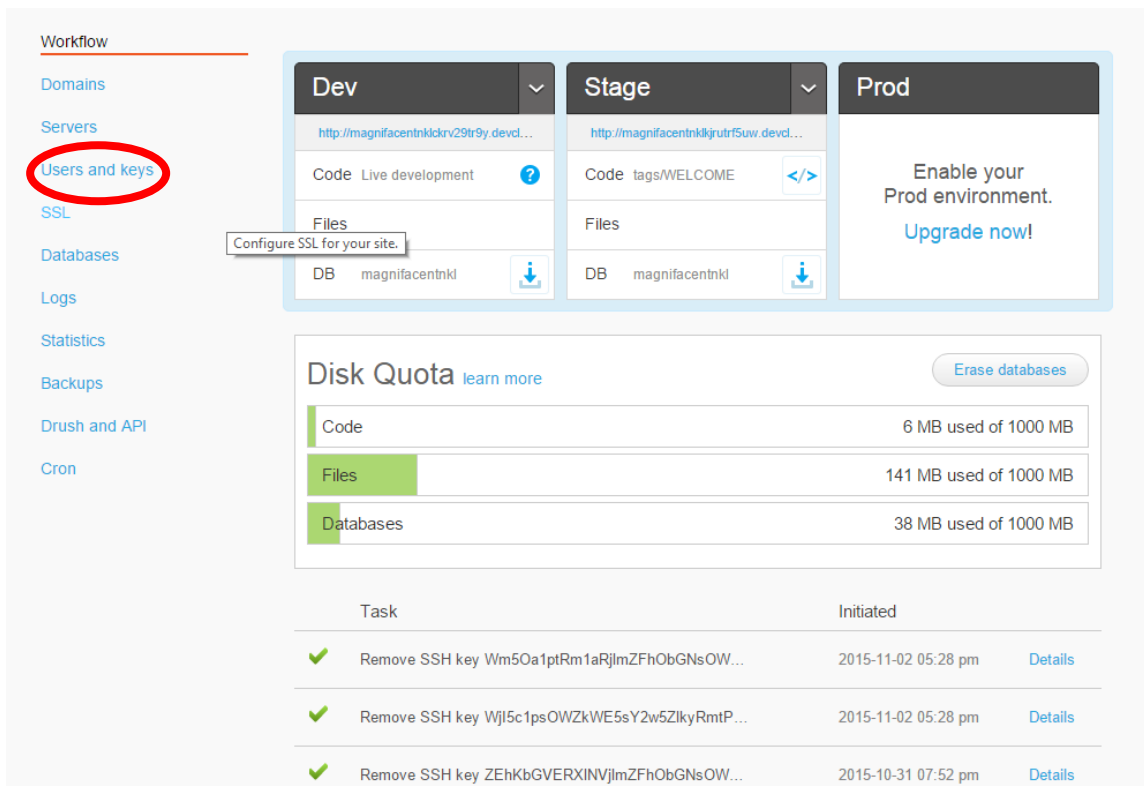
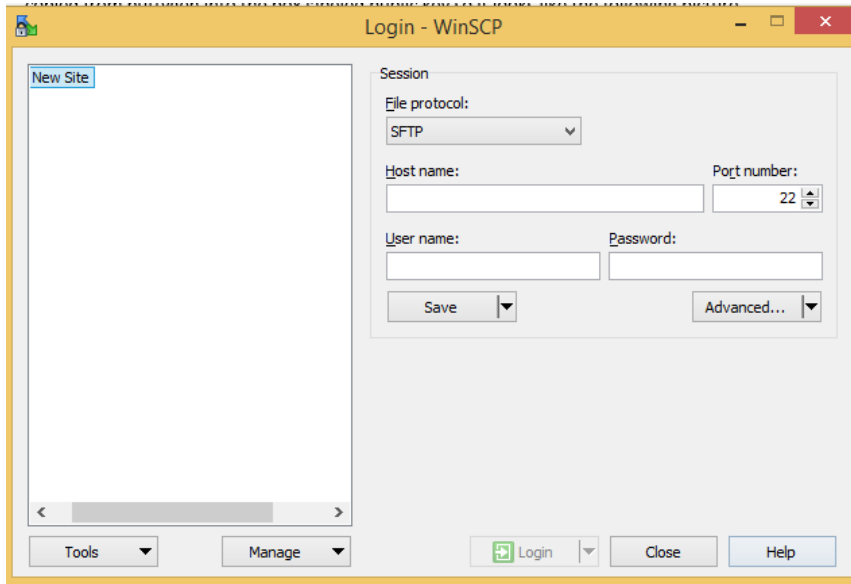
Public key *

```
ssh-rsa
AAAAB3NzaC1yc2EAAAABJQAAAQEAiXFib81UErW3hjuC+4hdGyR6NioGTCJATQJoFSk/atZ9D8tSfHPzw9kBO352ZDOtdOoZFu6S1Hx2e8+40
K4P/XEtPtmkxZmMLLGBN/5CDda77e/yI/T3sP86QDvdvD4AZsRlaROz3oQC2RkOMCP2BZhfSHUWCnJkP1R6t32sZWumJ5kOYd5gJwHsomg
Usf4oy/lw/J4H9+cIRAERUUn/vt7rh6UyiWwp2U4i5QWRZ4pma9K2jGefJwubKkuyVhwC17+Ms6Ck6dzuq6W913KCaroqBSgK/xTuPamMXTUr
NPwdtNOTfueX5tbqViuZx2yhwndYCSXIQudX1AQblHw== jsmith
```

Enter your SSH public key. To learn how to generate a SSH public key, see instructions for [Mac OS and Linux](#) or [Windows](#).

And click add key. If prompted input your password.

Next open up WinSCP.exe getting the following window.



Back on the cloud page click on Users and Keys.

Workflow
Domains
Servers
Users and keys
SSL
Databases
Logs
Statistics
Backups
Drush and API
Cron

✓ Acquia users can add SSH keys to their Acquia accounts. Users who are on a team assigned to this site and who have the proper permission can use their keys to access this site's servers and environments with SSH. [Learn more.](#)

SSH public keys

Adding an **SSH public key** allows you to access your Git repository and log in to your web server(s) with SSH, SCP, SFTP, and rsync. Once a key has been added, you may then log in to your server using the target site and environment as the username. For example:

```
% ssh magnifacentnkl.dev@free-4652.devcloud.hosting.acquia.com
```

In addition, [Drush Aliases](#) may be used as a convenient shortcut for SSH commands. For example:

```
% drush @magnifacentnkl.dev status
```

To see a full list of your available servers, visit the [Servers Page](#)

Need more info on generating SSH keys? Check out the Acquia docs for [Mac and Linux](#) or [Windows](#).

User SSH keys

Public keys are managed from [your account page](#). The users listed have been given access to this site through a [team](#). To remove access, the user must be removed from the team granting them access, or the permission for SSH access on that team revoked for the user.

Nickname	Fingerprint	Refresh
Andrew Trexler (jsmith)	4e:9e:2d:1a:a1:d1:94:29:ff:c8:8d:76:e6:19:17:b5	

You should see a SSH Key in the chart. You then copy the given example starting with your site name. So for mine I would copy [magnifacentnkl.dev@free-4652.devcloud.hosting.acquia.com](#). (what is circled.)

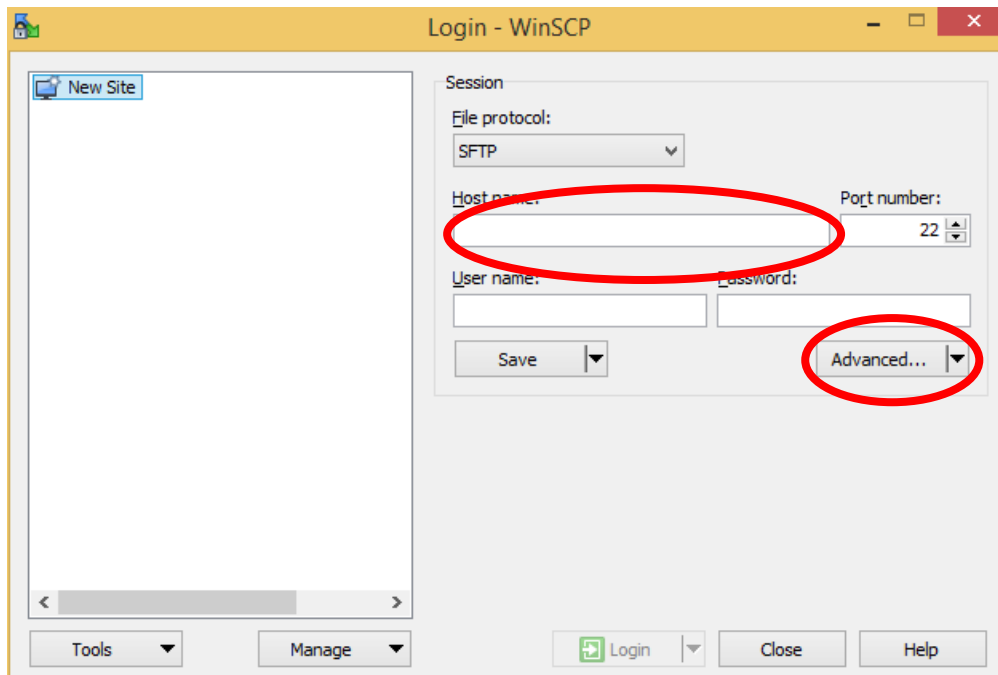
SSH public keys

Adding an **SSH public key** allows you to access your Git repository and log in to your web server(s) with SSH, SCP, SFTP, and rsync. Once a key has been added, you may then log in to your server using the target site and environment as the username. For example:

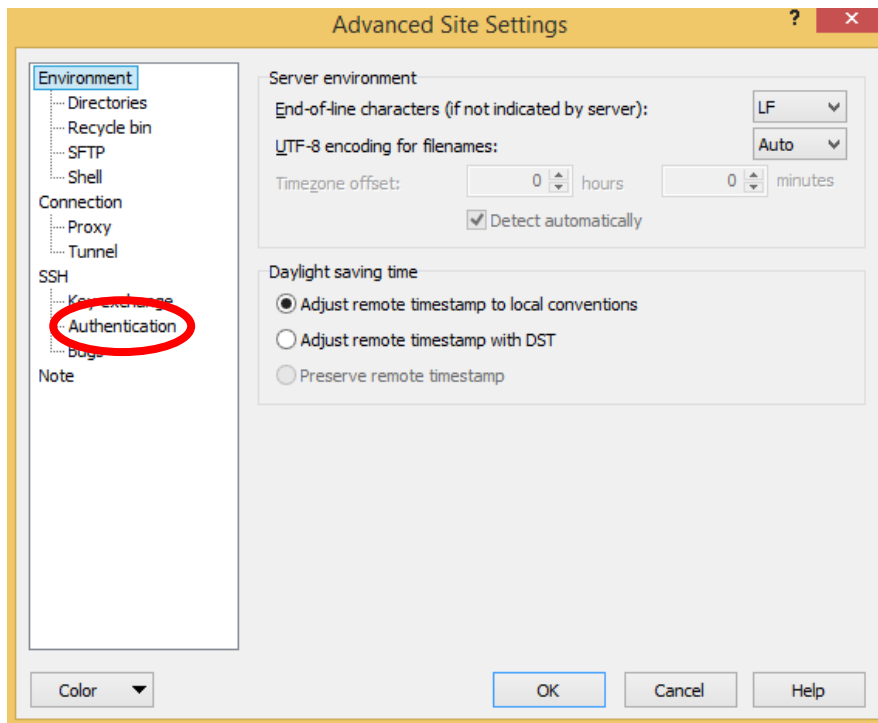
```
% ssh magnifacentnkl.dev@free-4652.devcloud.hosting.acquia.com
```

In addition, [Drush Aliases](#) may be used as a convenient shortcut for SSH commands. For example:

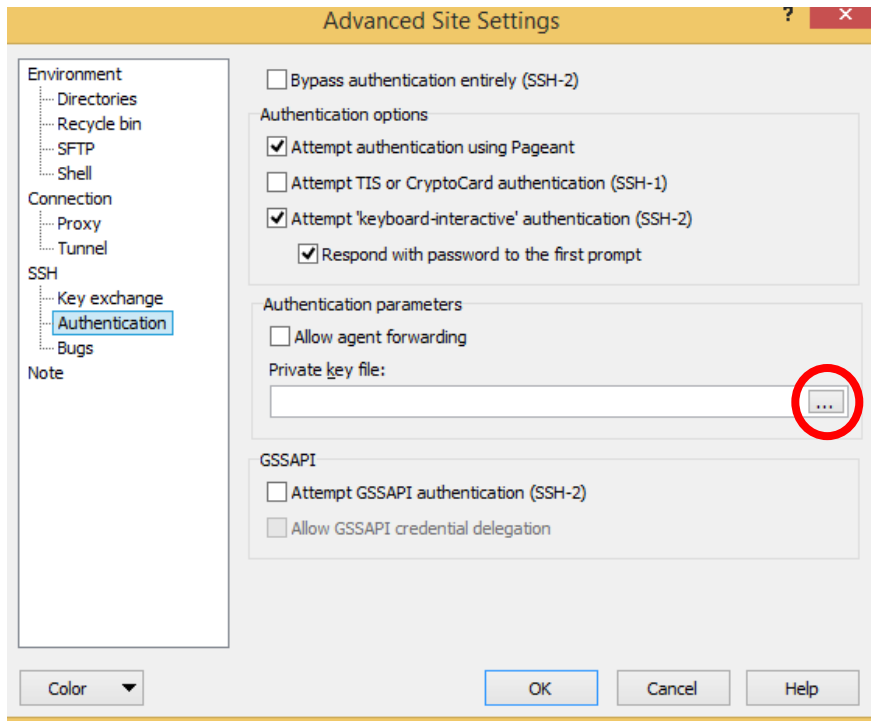
```
% drush @magnifacentnkl.dev status
```

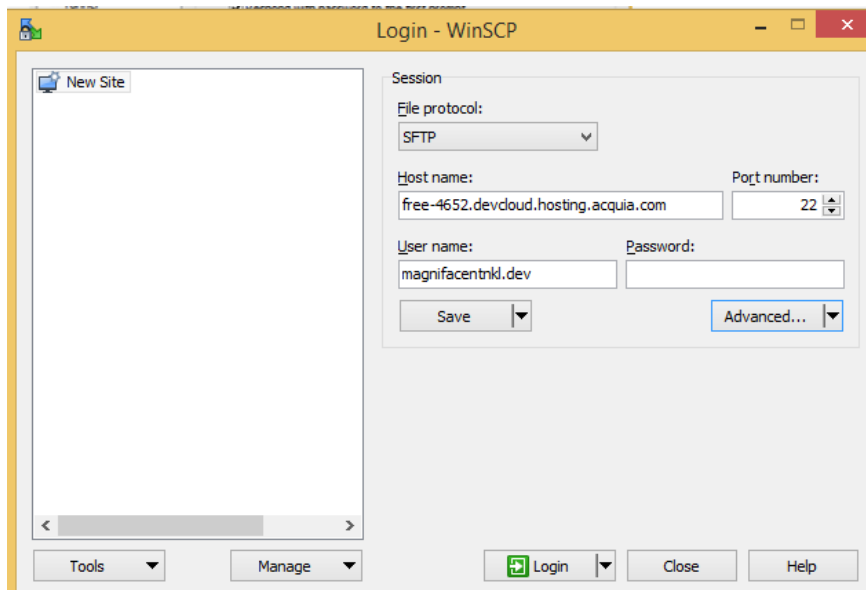
Take what you just copied and paste it into the Host name: box. It will auto format and fill the Host name and User name boxes. Then click Advanced.



Click on the Authentication tab under the SSH Heading



In the private key file box click the button with 3 dots. Then navigate to your private key and open it. Following this click ok.



Click the save button and then ok in the following pop-up. Then click login. In the following box input your password.